

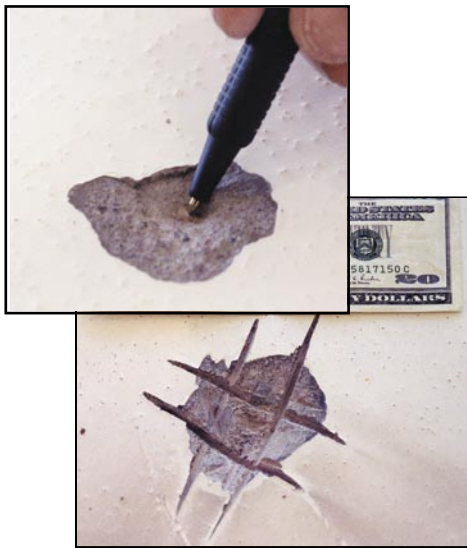
# REDFORD Corporation

Having a discussion...

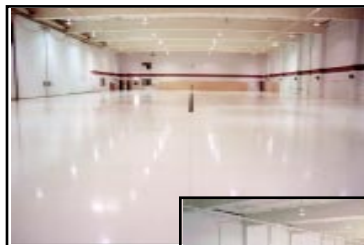
## “Concrete Floor Lime Pops”

Concrete sometimes “pops”, leaving holes. This can be best described as “volcanic eruptions” varying in size from one quarter (1/4) inch to over six (6) inches in diameter and two (2) inches deep.

Actual Example -  
Southwest Jet/Scottsdale, Arizona



Typical “eruption” cleaned/diamond cut for mechanical adhesion



Floor repaired and coated

### The Manifestation

“Lime pops” can be encountered anywhere, but some areas of the country are more prone to these problems than others. Specifically, areas like Arizona (with temperatures reaching 120°F during the day and 60°F at night) are more prone for this phenomena than other parts of the country. These “lime pops” literally explode leaving depressions randomly on the concrete surface. Usually, these are more exaggerated where direct sunlight hits the floor (from open doors, windows, etc.), but not limited to those areas. Sometimes there are 4-5 “pops” and other floors will have thousands.

Visual inspection of the eruption usually shows the expanded stone in the bottom of the eruption (please note photographs).

### The Prevention/Correction/Cure

Repair of these unsightly holes is relatively simple and im-

portant for aesthetics, especially if the concrete is to be coated. The **incorrect** repair procedure is to fill with “quickset” concrete. Instead, for long term adhesion, the holes should be cleaned, vacuumed and then scored. The grooves should be cut with a diamond blade for mechanical adhesion (please note second photograph). A 100% solids, non-shrinking epoxy is best for repair (**E31-1204 Crack Filler**).

After preparation, the two-part chemically reacted filler is mixed and knifed (putty knife applied) at a slightly higher level than the floor. The filler is then sanded flush to the floor (at 70°F, the **E31-1204** is usually sandable within four hours).

Following the above procedure, the eruptions are then paintable. No one will ever know they were there and they will not later reappear. Unfortunately, there can be no guarantee that additional areas may erupt.