



CLAY LACY AVIATION
Boeing Field Operations
8285 Perimeter Road South
Seattle, Washington 98108

CLAY LACY AVIATION CASE HISTORY / SEATTLE, WASHINGTON

Clay Lacy Aviation has owned, operated and managed small, medium and large cabin aircraft worldwide for over 35 years.

Their sales team has decades of aircraft transactional experience, combined with Clay Lacy Aviation’s 35 plus years of full-service private jet operations. Their foundation of long-term relationships and industry expertise provides our clientele a level of service unique within the aviation industry, whether buying or selling an aircraft.



Clay Lacy Aviation, Seattle is a 50/50 partnership between Clay Lacy and Joseph Clark (pioneer of winglets for aviation).

The general contractor for this new hangar expansion to Clay Lacy Aviation’s existing Seattle’s facilities is **JTM-Construction**. The principle’s and employees of **JTM Construction** provide expertise in multiple market sectors including class “A” office buildings, performing arts centers, medical facilities, hotels, retail centers, parking structures and warehouse buildings.



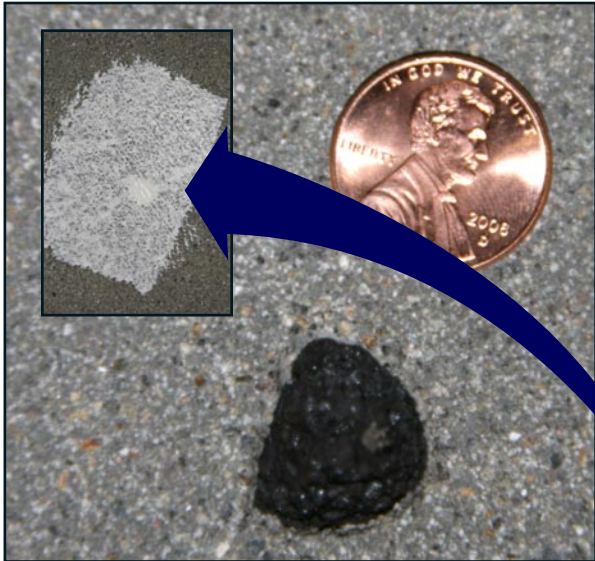
Shotblasting Contractor: **Washington Shotblasting**

Start of the shotblasting/surface preparation (using 230 shot and a 30” **BLASTRAC** machine).



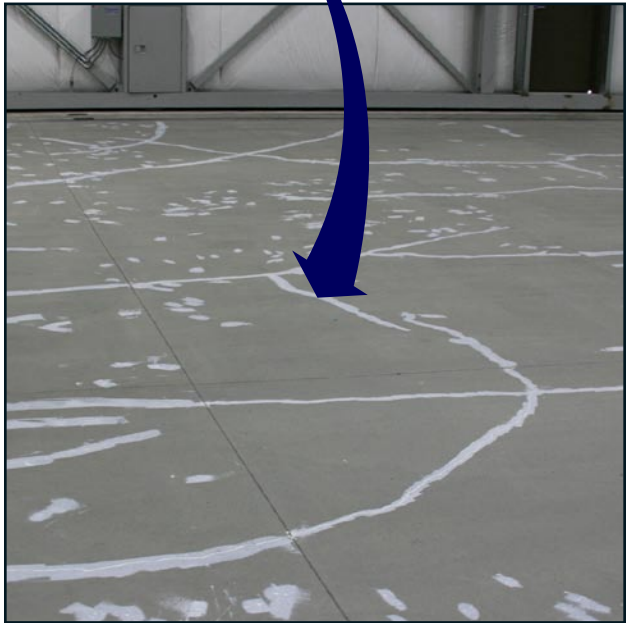
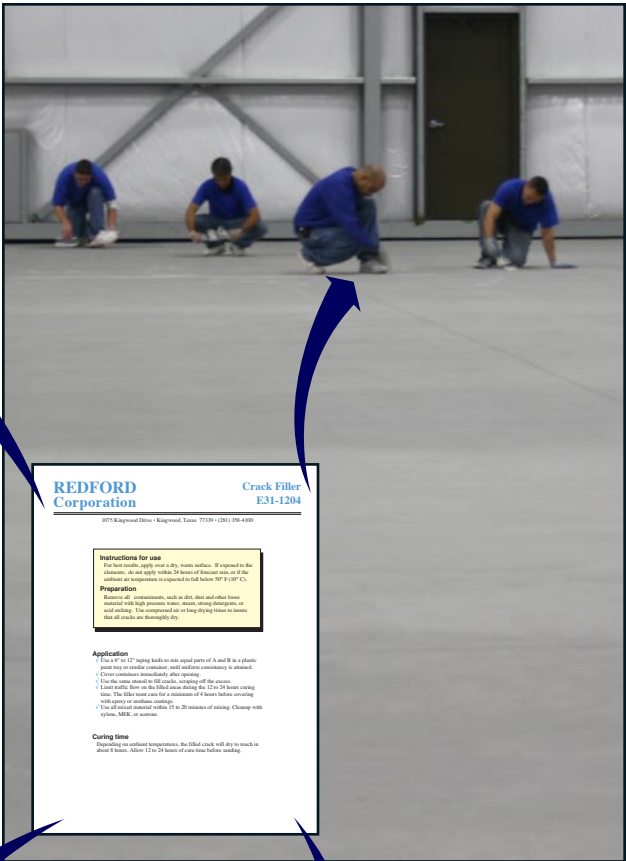
CLAY LACY AVIATION
Boeing Field Operations
8285 Perimeter Road South
Seattle, Washington 98108

CLAY LACY AVIATION CASE HISTORY / SEATTLE, WASHINGTON



Were there any unique problems?

Yes, after shotblasting we found 1000's of holes, most the size of a penny. These were initially filled with E31-1204 (before squeegeeing and backrolling E31-1202 100% solids epoxy).



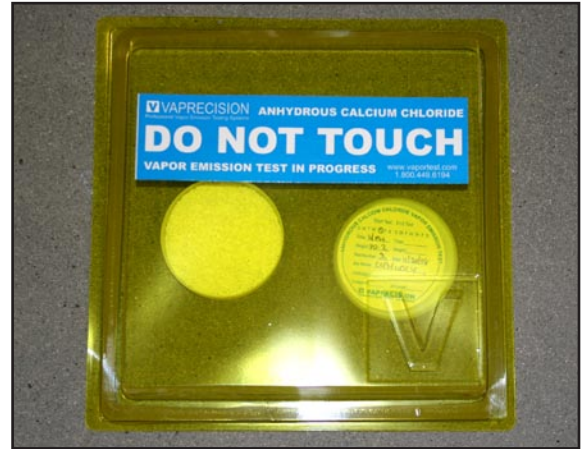


CLAY LACY AVIATION
Boeing Field Operations
8285 Perimeter Road South
Seattle, Washington 98108

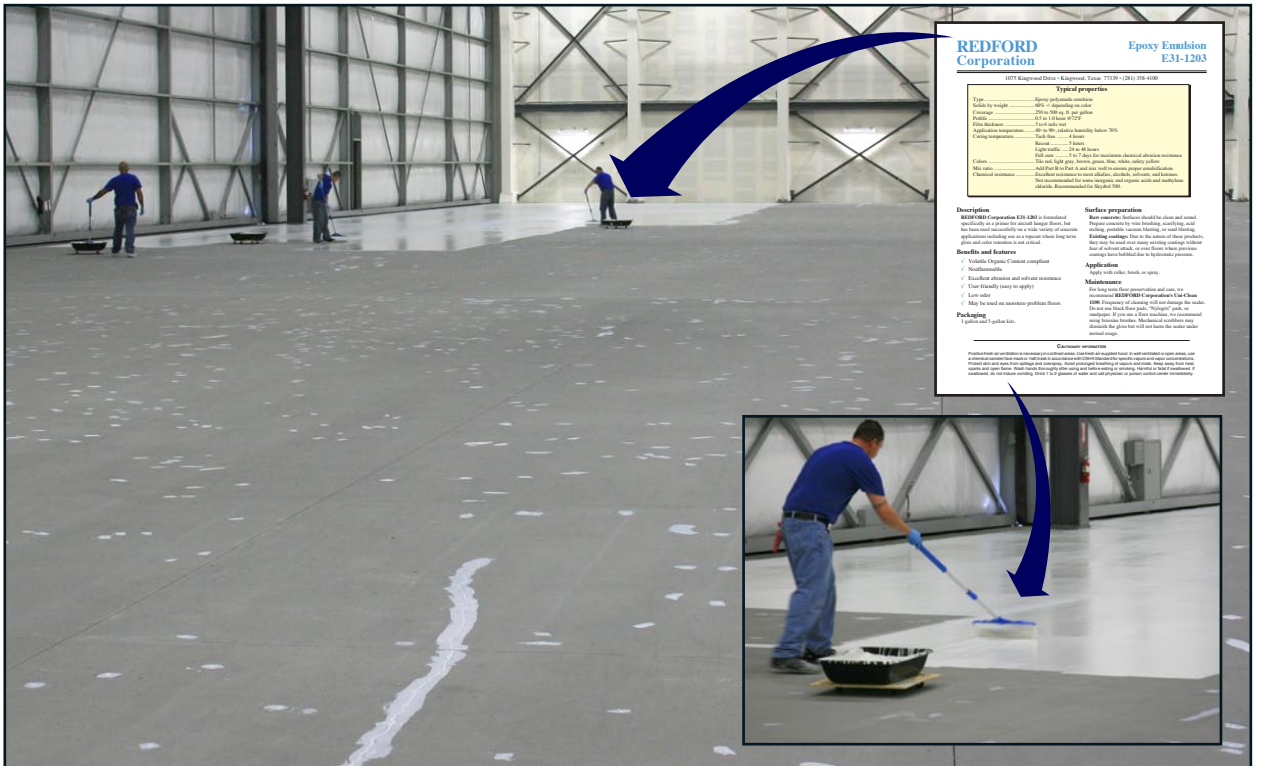
CLAY LACY AVIATION CASE HISTORY / SEATTLE, WASHINGTON



We were able to get the slab temperature to **75° F** with the radiant heat running continuously.



Calcium Chloride tests were run (with concrete moisture reading low).



Shotblasting/general floor preparation completed/start of initial priming process of **E31-1203**.



CLAY LACY AVIATION
Boeing Field Operations
8285 Perimeter Road South
Seattle, Washington 98108

CLAY LACY AVIATION CASE HISTORY / SEATTLE, WASHINGTON



REDFORD Corporation		Epoxy Coating
E31-1202		
Product Name	E31-1202	100% Solids Epoxy
Manufacturer	Redford Corporation	100% Solids Epoxy
Product Description	This is a 100% solids epoxy resin system designed for use as a primer and/or overlay on concrete and steel surfaces. It is a two-part system consisting of a resin and a hardener. The resin is a clear, viscous liquid and the hardener is a white, viscous liquid. The two parts are mixed together and applied to the surface. The system is designed for use in industrial and commercial environments where a high-strength, durable, and chemically resistant coating is required.	
Application	This system is applied using a roller or squeegee. The surface must be clean, dry, and free of contaminants. The system is applied in a thin, uniform layer. The system is designed for use on concrete and steel surfaces.	
Properties	This system has a high strength and is resistant to impact, abrasion, and chemicals. It is also resistant to moisture and salt crystallization. The system is designed for use in industrial and commercial environments where a high-strength, durable, and chemically resistant coating is required.	
Notes	This system is designed for use on concrete and steel surfaces. It is not designed for use on other materials. The system is designed for use in industrial and commercial environments where a high-strength, durable, and chemically resistant coating is required.	

E31-1203 initial epoxy primer completed/squeegeeing and backrolling **E31-1202** 100% solids epoxy overlayment started(to fill the 1000's of "bugholes" created from the concrete being blown out by the shot-blasting).



Power sanding the **E31-1202** epoxy overlayment to insure good intercoat adhesion.



CLAY LACY AVIATION
Boeing Field Operations
8285 Perimeter Road South
Seattle, Washington 98108

CLAY LACY AVIATION CASE HISTORY / SEATTLE, WASHINGTON



Hangar floor completed (E31-1202).



Final topcoats of U31-1201 high performance urethane applied and aircraft starting to move in.



CLAY LACY AVIATION
Boeing Field Operations
8285 Perimeter Road South
Seattle, Washington 98108

CLAY LACY AVIATION CASE HISTORY / SEATTLE, WASHINGTON

Additional photographs of aircraft “moved-in.”



A “masterpiece.”