



Christian Brothers Automotive

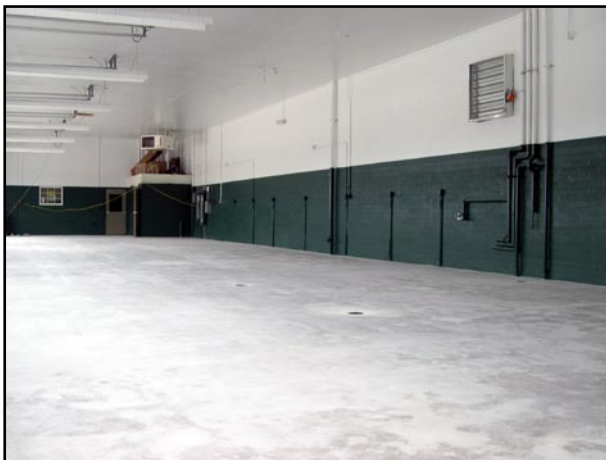
580 US Hwy. 79
Hutto, Texas 78634
512-759-3760

Owner
Jonathan Carr
Manager
Keith Guyton

General Contractor
EBCO General Contractor, LTD.
Cameron, Texas 76520



Hutto is a city in Williamson County, in the Austin-Round Rock metro area. Hutto is one of the fastest growing small cities in America. Recent city information has it as the second fastest growing small city in Texas, at a rate of approximately 880% for a span of 5 years (2000-2005). Hutto was established in 1876 when the **International-Great Northern Railroad** passed through land owned by James Emory Hutto and the fledgling town was named for him.



CHRISTIAN BROTHERS AUTOMOTIVE HUTTO, TEXAS Automotive Shop Floor



Christian Brothers Automotive

580 US Hwy. 79
Hutto, Texas 78634
512-759-3760

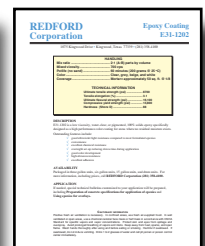
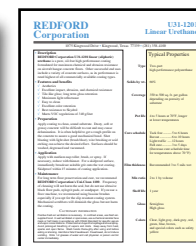
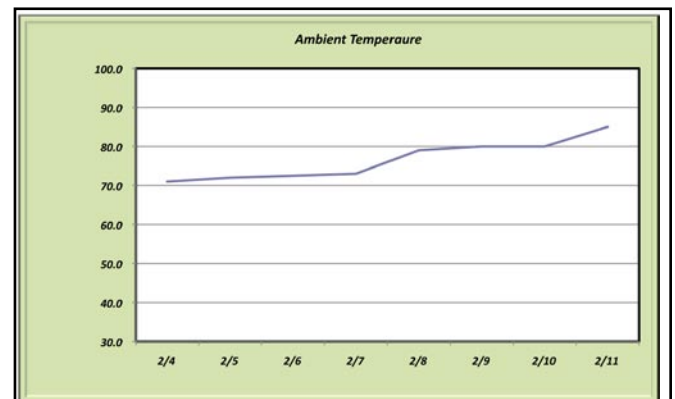
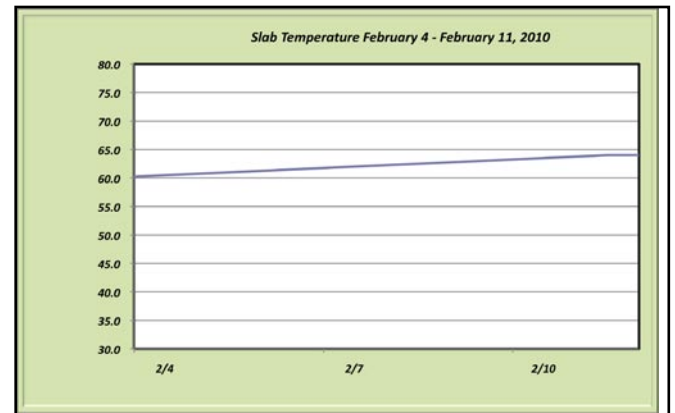
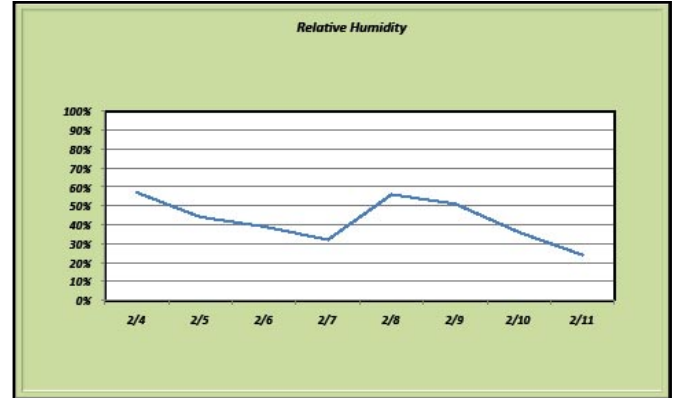
CHRISTIAN BROTHERS AUTOMOTIVE HUTTO, TEXAS Automotive Shop Floor

Were there any unique problems with this project? Yes, the first four (4) days, we lacked lights in the shop. Additionally, water from driving rain came in under the bay doors! After four (4) days, **EBCO General Contractor, LTD** found a solution to one-half (1/2) of the bay lights. We never had permanent power because of “power pole placement” issues by the local utility company.

We were able to see much better with one-half (1/2) the lights on (during cloudy and overcast days) and we were able to work at night. The weather cooperated somewhat and we were able to apply **E31-1204/E31-1202/ E31-1203/U31-1201** and **Devthane 379**, keeping the schedule we outlined at the project start.

The newer style heaters in Hutto (even with temporary power), provided excellent heat, though we wish they had been on at least a week prior to our arrival (because the 3,000+ square feet of concrete is a large heat sync and the concrete slab temperature does not rise rapidly).

SCOPE SEQUENCING/CBAC HUTTO	
DAY 1 - Day 4	Prepare substrate via diamond grinding/profiling; fill cracks and divots with E31-1204 ; apply E31-1203 epoxy concrete primer,
DAY 5	Apply E31-1202 epoxy overlayment,
DAY 6	Apply 1st U31-1201 urethane topcoat,
DAY 7	Apply 2nd U31-1201 urethane topcoat,
DAY 8	Install green pads,
DAY 9	Cure/clean-up,
DAY 10	Shop open to heavy traffic.





Christian Brothers Automotive

580 US Hwy. 79
Hutto, Texas 78634
512-759-3760

CHRISTIAN BROTHERS AUTOMOTIVE HUTTO, TEXAS Automotive Shop Floor



“Beveling” / repair of drain areas.



Driving rain causing water to come in under the bay doors.



REDFORD Corporation		Epoxy Coating E31-1202	
100% Solids Epoxy Coating System 100% Solids Epoxy Coating			
Product Name	E31-1202	Manufacturer	REDFORD Corporation
Product Description	100% Solids Epoxy Coating System	Product Weight	50 lbs (22.7 kg)
Product Color	White	Product Volume	1.5 gal (5.7 L)
Product Type	Coating	Product Density	11.5 lb/gal (1.4 g/cm³)
Product Use	Industrial, Commercial	Product Shelf Life	12 months
Product Application	Roller, Pusher	Product Storage	5-10°C (41-50°F)
Product Safety	Low VOC, Low Odor	Product Disposal	As a hazardous waste
Product Features	High Gloss, Durable	Product Notes	See MSDS for more information
Product Benefits	Easy to Apply, Long Life	Product Warnings	Flammable, Irritant
Product Compliance	Meets Industry Standards	Product Restrictions	Not for use on concrete
Product Certifications	ISO 9001, ISO 14001	Product Availability	Available in most markets
Product Contact	REDFORD Corporation	Product Website	www.redfordcorporation.com

Applying E31-1202 100% solids epoxy.



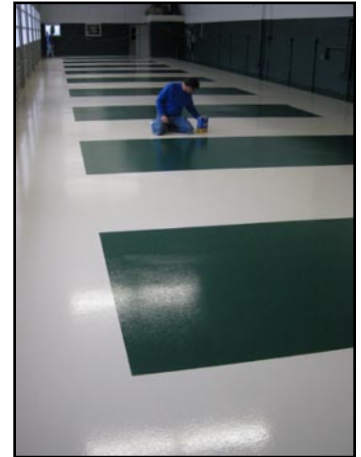
Christian Brothers Automotive

580 US Hwy. 79
Hutto, Texas 78634
512-759-3760

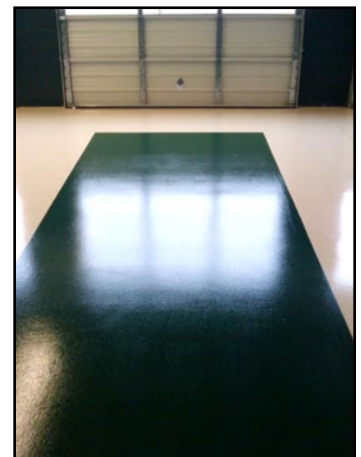
CHRISTIAN BROTHERS AUTOMOTIVE HUTTO, TEXAS Automotive Shop Floor



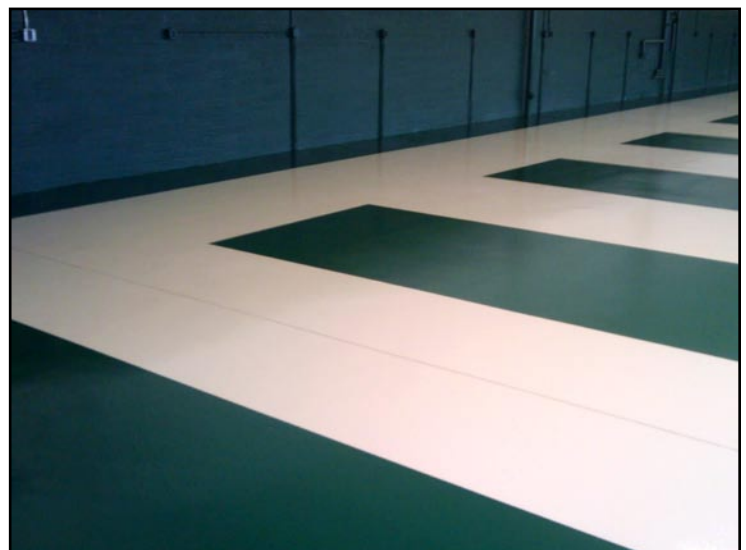
Green pads being installed.



DEVCO HIGH PERFORMANCE COATINGS		DEVTHANE 379UVA
PRODUCT DESCRIPTION		ALIPHATIC URETHANE GLOSS ENAMEL
GENERAL DESCRIPTION		White, Ready-Mixed & Custom Colors
<p>Product Description: Devthane 379UVA is a high performance, two-component aliphatic urethane enamel, available in gloss, semi-gloss, and satin finishes. It is a 2K system consisting of a resin and a hardener.</p> <p>Application: Devthane 379UVA is applied by roller, brush, or spray. It is used on a variety of substrates including steel, aluminum, and concrete. It is also used on interior and exterior surfaces, such as walls, ceilings, and floors. It is used in the food service areas of food processing plants, schools, hospitals, and other commercial buildings. It is also used on machinery, equipment, and structural steel.</p>		<p>Color: White, Ready-Mixed, and Custom Colors</p> <p>Finish: Gloss (90 units @ 40°), Semi-Gloss (60 units @ 40°), Satin (30 units @ 40°)</p> <p>Application: Roller, Brush, or Spray</p> <p>Weight: 11.0 lbs/gal (1.50 kg/L) - varies with solids</p> <p>Volume: 9.0 gal (34.1 L) - varies with solids</p> <p>Application: Devthane 379UVA is applied by roller, brush, or spray. It is used on a variety of substrates including steel, aluminum, and concrete. It is also used on interior and exterior surfaces, such as walls, ceilings, and floors. It is used in the food service areas of food processing plants, schools, hospitals, and other commercial buildings. It is also used on machinery, equipment, and structural steel.</p>
FEATURES		PERFORMANCE DATA
<p>Advantages:</p> <ul style="list-style-type: none"> Excellent gloss and color retention Excellent abrasion and chemical resistance High solids and high film build Lightweight UV Resistant ISO Compliant Early applied to steel, roller or spray Good water resistance Excellent adhesion Excellent resistance to staining, marking, and scuffing Excellent abrasion light abrasion <p>Quality Assurance:</p> <p>Devco provides a 12-month warranty on all Devco products. For more information on the quality assurance program, contact your Devco Representative.</p> <p>Limitations of Use: Color may change as temperature increases above 120°F (50°C). See technical data sheet.</p>		<p>Volume: 9.0 gal (34.1 L) - varies with solids</p> <p>Application: Devthane 379UVA is applied by roller, brush, or spray. It is used on a variety of substrates including steel, aluminum, and concrete. It is also used on interior and exterior surfaces, such as walls, ceilings, and floors. It is used in the food service areas of food processing plants, schools, hospitals, and other commercial buildings. It is also used on machinery, equipment, and structural steel.</p> <p>Weight: 11.0 lbs/gal (1.50 kg/L) - varies with solids</p> <p>Volume: 9.0 gal (34.1 L) - varies with solids</p> <p>Application: Devthane 379UVA is applied by roller, brush, or spray. It is used on a variety of substrates including steel, aluminum, and concrete. It is also used on interior and exterior surfaces, such as walls, ceilings, and floors. It is used in the food service areas of food processing plants, schools, hospitals, and other commercial buildings. It is also used on machinery, equipment, and structural steel.</p>



Green pads installed.





Christian Brothers Automotive

580 US Hwy. 79
Hutto, Texas 78634
512-759-3760

CHRISTIAN BROTHERS AUTOMOTIVE HUTTO, TEXAS Automotive Shop Floor



Finished Floor



Hutto Shop in Operation
April 2010





Christian Brothers Automotive

580 US Hwy. 79
 Hutto, Texas 78634
 512-759-3760

**Case History
 ADDENDUM
 April 2010**

For reasons unknown, three (3) areas the size of a man’s hand (where cars parked/tires sat) peeled up [but only on one (1) green pad]. We are at a loss to explain why this occurred. We often explain “that the owner could have been present with us the entire time and the Pope came and blessed our work, and we still can have problems”.

The photographs below document those three (3) problem areas and the subsequent repair.

Hopefully, there will be no more!



Photographs (1-3) show peeled areas during initial “exploratory preparation” stage.



Photographs (4-6) show concrete bonding to coating (which is good), therefore leading to questions of the integrity of the concrete immediately below the coating failure.



Photographs (7-9) are the “after” photographs prior to return to service. Once in service, the “burnishing” effect of traffic minimizes any differences in appearance.



Christian Brothers Automotive

580 US Hwy. 79
Hutto, Texas 78634
512-759-3760

Christian Brothers Automotive Hutto is one of the most beautiful **CBAC** Locations anywhere. The automotive repair shop sets a warm feeling from the pleasant, clean environment (as well as a beautiful lobby). Again, it is truly a well managed automotive repair shop, over the top on cleanliness - the **CBAC** experience really stands out!

