

Christian Brothers Automotive



5816 Coulter Street
Amarillo, TX 79119
(806) 352-3800

Owners
The Hoffman Family



Developer
Christian Brothers Automotive
15995 N. Barkers Landing #145
Houston, Texas 77079

General Contractor
EBCO General Contractors
305 W. Gillis Avenue
Cameron, Texas 76520

Amarillo is one of the last places on earth where the Old West is just minutes away. Amarillo sits at the crossroads of America, almost equidistant from both coasts. U.S. Routes 60, 87, 287, and 66 merge at Amarillo, making it a major tourist stop. Since the 16th century, Amarillo and the Texas Panhandle have drawn visitors from around the world. In 1893 Amarillo's population was listed as "between 500-600 humans and 50,000 head of cattle." By 2010 the population of the city will near an estimated 200,000!



When the oil boom hit Texas, it exploded across the Texas Panhandle. Vast fortunes were made overnight and the region's economy grew because of the lure of black gold.

Since World War II, the Panhandle economy has diversified to include heavy manufacturing, petrochemicals, farming and, of course, modern ranching. In the last decades, the ranches have been the key to a new industry--tourism. The Amarillo area is now a major destination for Old West enthusiasts from all over the globe.

Amarillo and the surrounding Panhandle area are a unique blend of two American eras. There are the working ranches, essentially unchanged in the day-to-day operations from the late nineteenth century, and there is a vibrant twenty-first century economy, providing leadership for the modern west. That's why we say when you step into Amarillo, you "Step Into The Real Texas."

Amarillo was the first city in Texas and only the fifth in the nation to adopt a city commission/city manager form of government.

Amarillo, Texas is location #75 in Christian Brothers Automotive's expanding franchise network with locations now in nine (9) states.

*Caring For The Family
Caring For The Family Car.*

It's what we do best.



Building under construction - Shop opening in August 2010

We now utilize a planetary grinder for surface preparation, on Christian Brothers Automotive locations because we have found that it "opens" the surface to promote adhesion, and at the same time flattens and smooths the slab for a superior finish.

This machine utilizes a system of three diamond disks that rotate in planetary motion with almost a thousand pounds of pressure. While this process takes more time, we feel that the superior results are worth it.



BMG-535
Grinder/Polisher



General surface preparation/Diamond grinding started

Christian Brothers Automotive

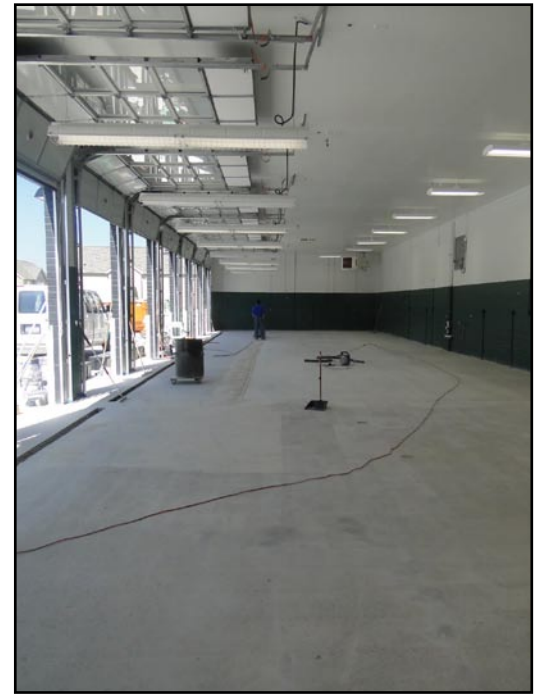


5816 Coulter Street
Amarillo, TX 79119
(806) 352-3800

Owners
The Hoffman Family

Developer
Christian Brothers Automotive
15995 N. Barkers Landing #145
Houston, Texas 77079

General Contractor
EBCO General Contractors
305 W. Gillis Avenue
Cameron, Texas 76520



Diamond Grinding / Sanding / Vacuuming / General Surface Preparation

Christian Brothers Automotive

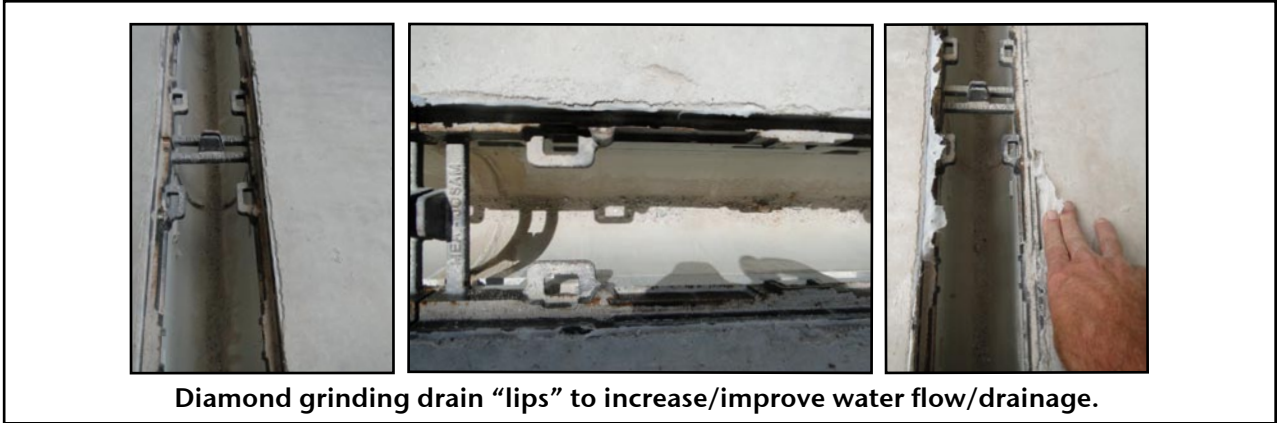


5816 Coulter Street
Amarillo, TX 79119
(806) 352-3800

Owners
The Hoffman Family

Developer
Christian Brothers Automotive
15995 N. Barkers Landing #145
Houston, Texas 77079

General Contractor
EBCO General Contractors
305 W. Gillis Avenue
Cameron, Texas 76520



Diamond grinding drain "lips" to increase/improve water flow/drainage.



E31-1204 Crack Filler

Concrete primer being applied

Christian Brothers Automotive

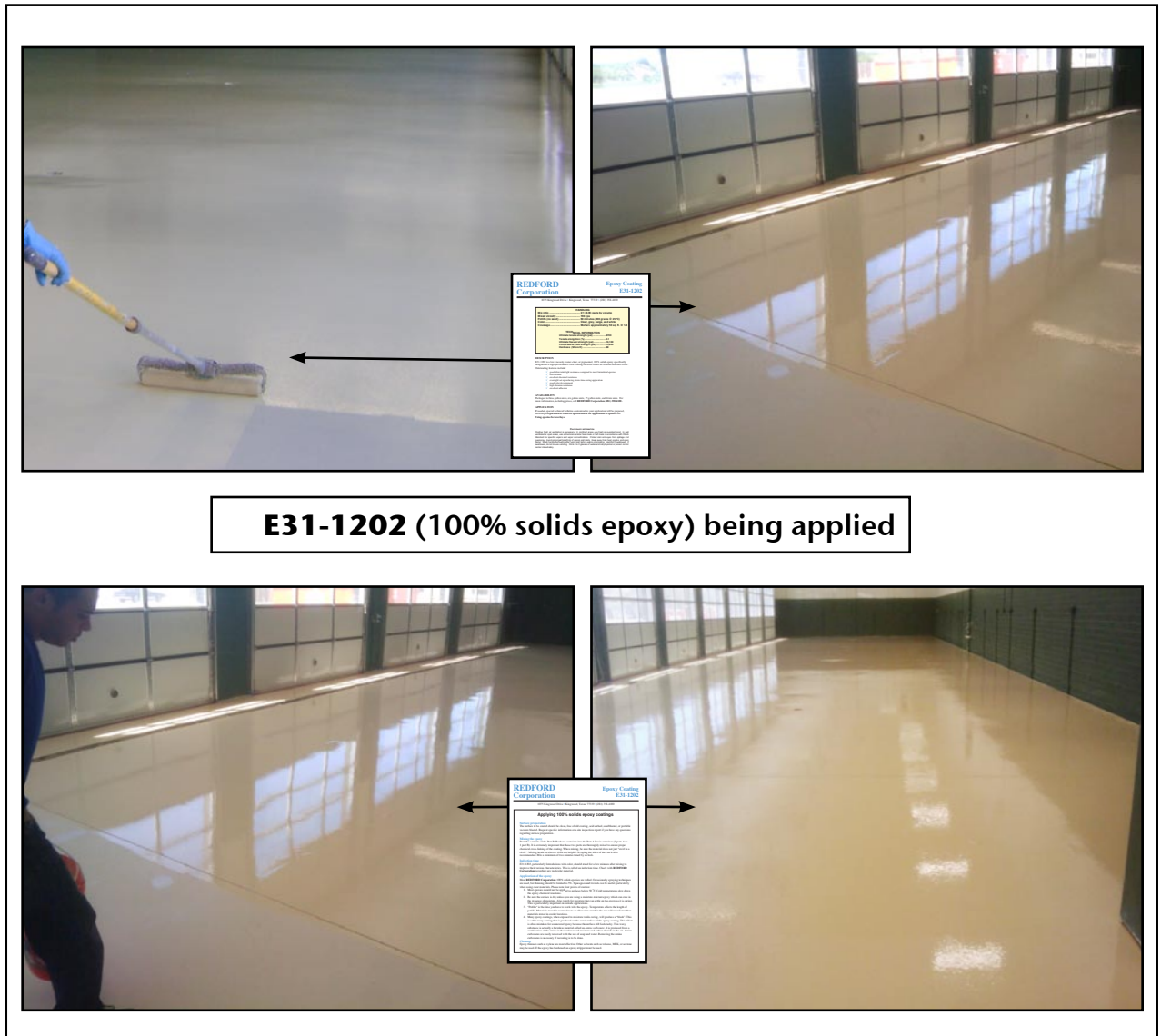


5816 Coulter Street
Amarillo, TX 79119
(806) 352-3800

Owners
The Hoffman Family

Developer
Christian Brothers Automotive
15995 N. Barkers Landing #145
Houston, Texas 77079

General Contractor
EBCO General Contractors
305 W. Gillis Avenue
Cameron, Texas 76520



E31-1202 (100% solids epoxy) being applied

Christian Brothers Automotive



5816 Coulter Street
Amarillo, TX 79119
(806) 352-3800

Owners
The Hoffman Family

Developer
Christian Brothers Automotive
15995 N. Barkers Landing #145
Houston, Texas 77079

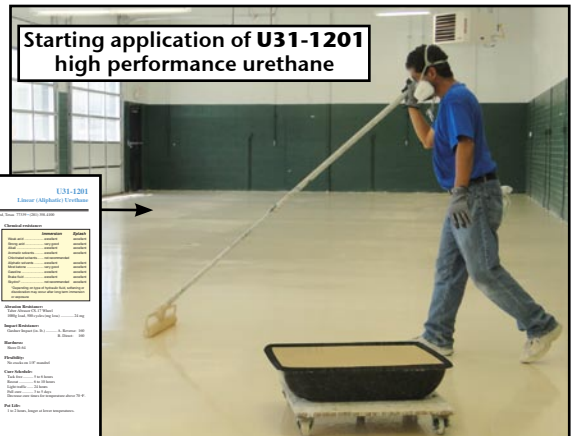
General Contractor
EBCO General Contractors
305 W. Gillis Avenue
Cameron, Texas 76520



Coating Mix Station



Sanding entire floor for intercoat adhesion



Starting application of U31-1201 high performance urethane

REDFORD Corporation		U31-1201
Epoxy Urethane Coatings		Linear Urethane Coatings
Key Characteristics:		
• High strength		• High strength
• Excellent adhesion		• Excellent adhesion
• Low VOC		• Low VOC
• Fast cure		• Fast cure
• Easy to apply		• Easy to apply
• Excellent abrasion resistance		• Excellent abrasion resistance
• Excellent chemical resistance		• Excellent chemical resistance
• Excellent impact resistance		• Excellent impact resistance
• Excellent UV resistance		• Excellent UV resistance
• Excellent fire resistance		• Excellent fire resistance
• Excellent slip resistance		• Excellent slip resistance
• Excellent odor resistance		• Excellent odor resistance
• Excellent stain resistance		• Excellent stain resistance
• Excellent color retention		• Excellent color retention
• Excellent gloss retention		• Excellent gloss retention
• Excellent durability		• Excellent durability
• Excellent performance		• Excellent performance
• Excellent value		• Excellent value
• Excellent service		• Excellent service
• Excellent support		• Excellent support
• Excellent training		• Excellent training
• Excellent safety		• Excellent safety
• Excellent quality		• Excellent quality
• Excellent reliability		• Excellent reliability
• Excellent consistency		• Excellent consistency
• Excellent uniformity		• Excellent uniformity
• Excellent finish		• Excellent finish
• Excellent appearance		• Excellent appearance
• Excellent performance		• Excellent performance
• Excellent value		• Excellent value
• Excellent service		• Excellent service
• Excellent support		• Excellent support
• Excellent training		• Excellent training
• Excellent safety		• Excellent safety
• Excellent quality		• Excellent quality
• Excellent reliability		• Excellent reliability
• Excellent consistency		• Excellent consistency
• Excellent uniformity		• Excellent uniformity
• Excellent finish		• Excellent finish
• Excellent appearance		• Excellent appearance



E31-1204 Crack filler applied/Concrete primer applied/E31-1202 100% solids epoxy applied/U31-1201 high performance urethane applied

Christian Brothers Automotive



5816 Coulter Street
Amarillo, TX 79119
(806) 352-3800

Owners

The Hoffman Family

Developer

Christian Brothers Automotive
15995 N. Barkers Landing #145
Houston, Texas 77079

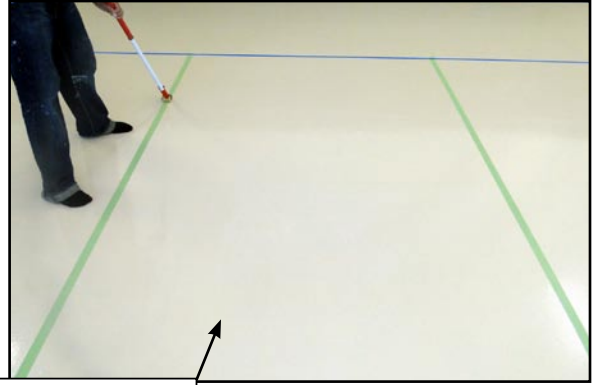
General Contractor

EBCO General Contractors

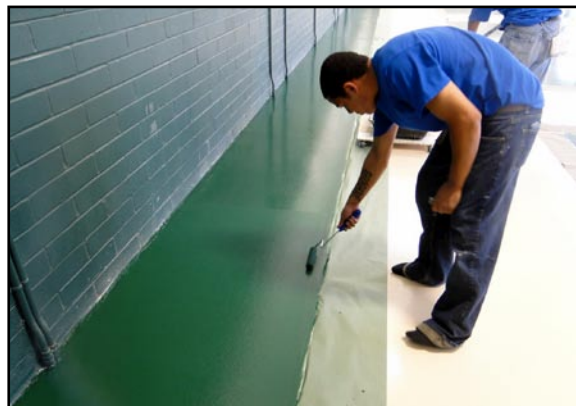
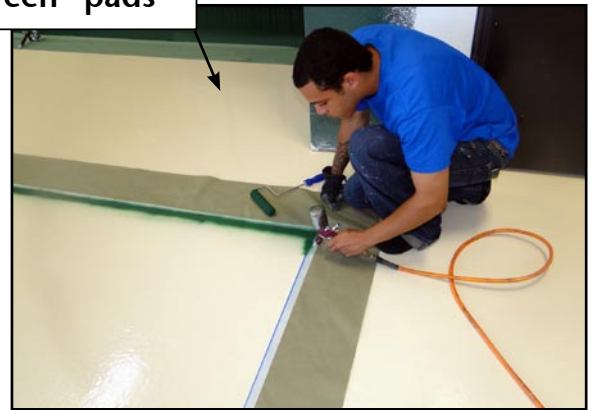
305 W. Gillis Avenue
Cameron, Texas 76520



Following an intense program of surface preparation, coating, patching, concrete restoration and inspection of the floor, the non-skid urethane surface is now ready for the application of bay "pads".



Laying out green "pads"



Green pads "laid out"/Devthane being 379UVA applied

Christian Brothers Automotive

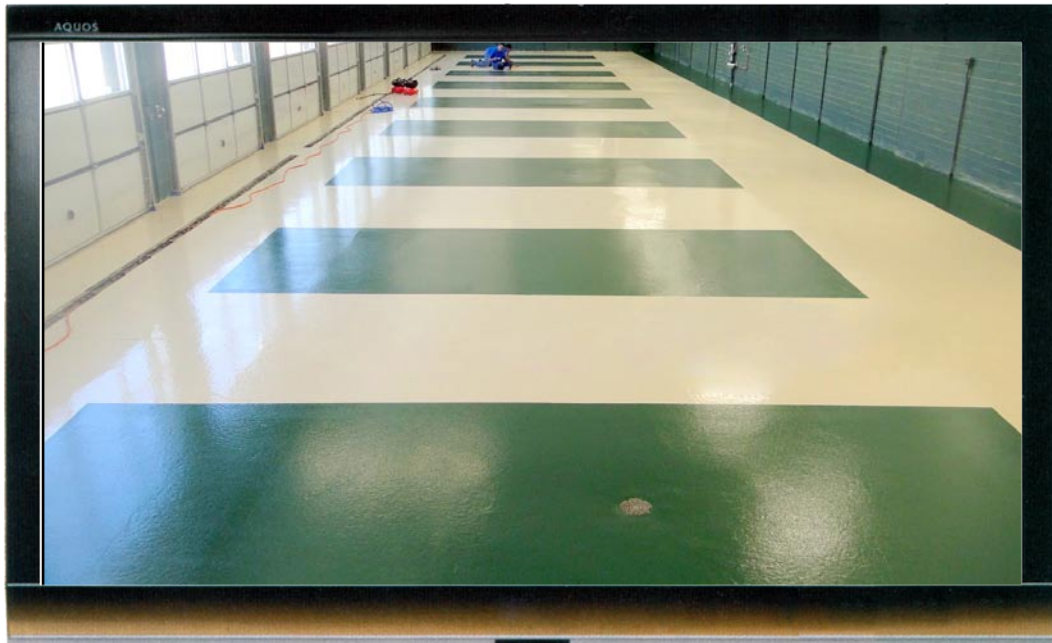


5816 Coulter Street
Amarillo, TX 79119
(806) 352-3800

Owners
The Hoffman Family

Developer
Christian Brothers Automotive
15995 N. Barkers Landing #145
Houston, Texas 77079

General Contractor
EBCO General Contractors
305 W. Gillis Avenue
Cameron, Texas 76520



Finished shop floor

Christian Brothers Automotive



5816 Coulter Street
Amarillo, TX 79119
(806) 352-3800

Owners
The Hoffman Family

Developer
Christian Brothers Automotive
15995 N. Barkers Landing #145
Houston, Texas 77079

General Contractor
EBCO General Contractors
305 W. Gillis Avenue
Cameron, Texas 76520

